

10 SOLAR PANELS
Save up to 50% on your electricity bills annually*



1,250 Sq.Ft.

 **3** Bed

 **2.5** Bath

BRADY18

906 WOLF WILLOW BLVD SE
CALGARY, AB

L83-041-0015

AVAILABLE
TOWNHOME

JAYMAN'S STANDARD INCLUSIONS

- Core Performance with 10 Solar Panels
- BuiltGreen Canada standard, with an EnerGuide Rating
- UV-C Ultraviolet Light Air Purification System
- High Efficiency Furnace with Merv 13 Filters & HRV Unit
- Navien-Brand Tankless Hot Water Heater
- Triple Pane Windows
- Smart Home Technology Solutions

INQUIRE FOR PRICING

ADDITIONAL FEATURES

- Extra Fit & Finish™
- Professionally Designed Birch Whisper Colour Palette
- Stainless Steel Appliances with Built-In Cabinet Hood Fan
- Quartz Countertops Throughout
- 4' x 4' Rear Landing
- Fully Fenced & Landscaped
- No Condo Fees



Renderings and images are representational only.

TO VIEW YOUR NEW DREAM HOME, CONTACT:

Christina Caddel, Area Sales Manager
403.474.1277 | wolfwillowtowns@Jayman.com | Jayman.com



LIFE READY FOR THE WAY YOU LIVE

\$21,000 IN ENERGY EFFICIENT FEATURES INCLUDED!

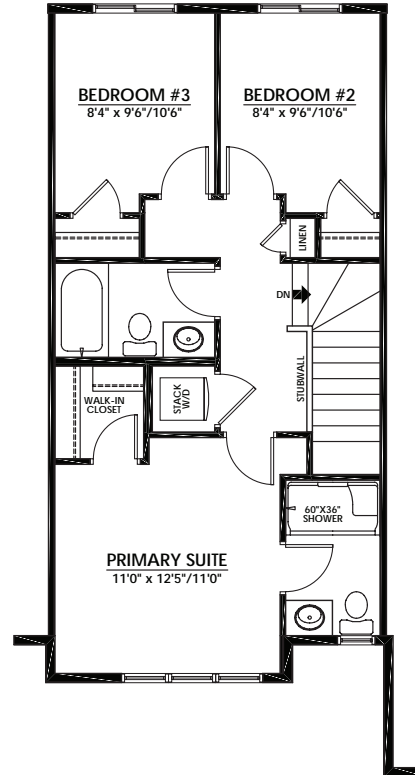
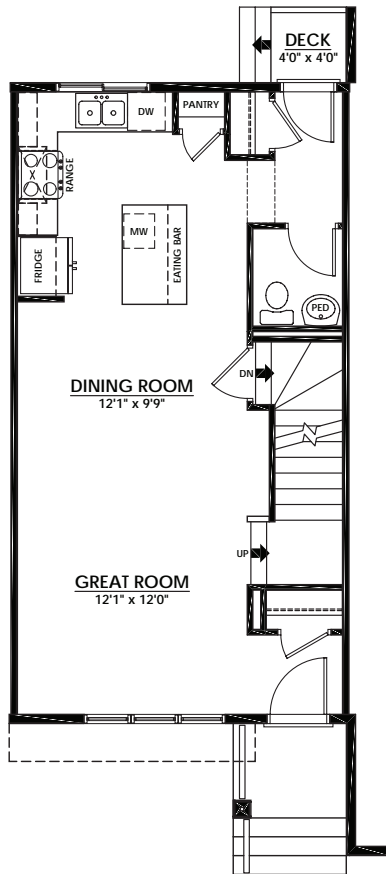
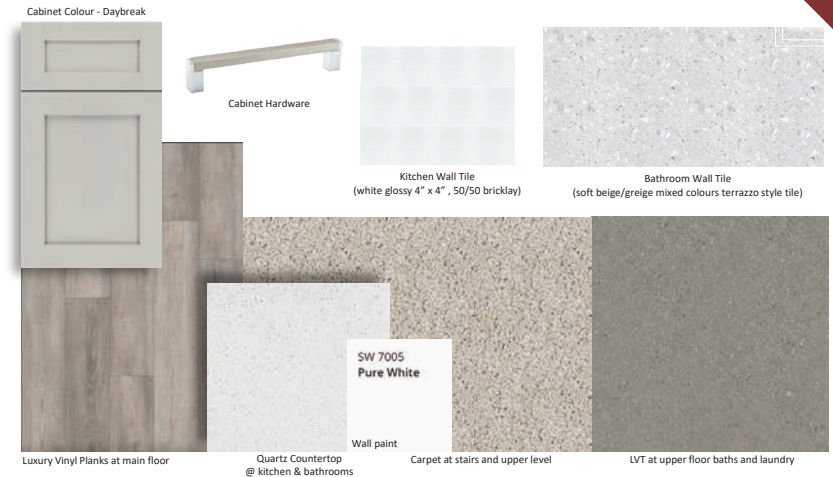
MAIN FLOOR 612 Sq.Ft.

- Bright Rear Kitchen with Island Eating Bar
- Convenient Pantry Closet
- Front & Rear Closets for Additional Storage

UPPER FLOOR 638 Sq.Ft.

- Sliding Glass Door Shower in Primary Ensuite
- Primary Suite Walk-In Closet
- Stackable Laundry Closet

BIRCH WHISPER COLOUR PALETTE



IT'S EASIER THAN EVER TO JOIN THE JAYMAN FAMILY



Maximize your home's RESALE EQUITY

Jayman Realty makes selling your home easier than ever. While you concentrate on the purchase of your new Jayman BUILT home, we'll concentrate on the sale of your existing home. We offer full MLS exposure to thousands of licenced REALTORS® and potential buyers through REALTOR.ca.



Providing you the absolute BEST MORTGAGE

Buying a new home is one of the most important financial decisions you will make. Our mortgage professionals will guide you through the entire process, providing you with expert advice to find the best financing solution for your new Jayman BUILT home.

DISCOVER YOUR NEXT HOME AT [Jayman.com](https://www.jayman.com)

Reflects 2024 Fit & Finish™ specifications. Renderings and images are representational only. Specifications subject to change without notice. Products and colours may be discontinued or unavailable at time of construction and a substitution required. This document is intended for marketing purposes only and does not constitute part of the purchase agreement. E.&O.E. *Electricity savings do not include administration and other associated fees.